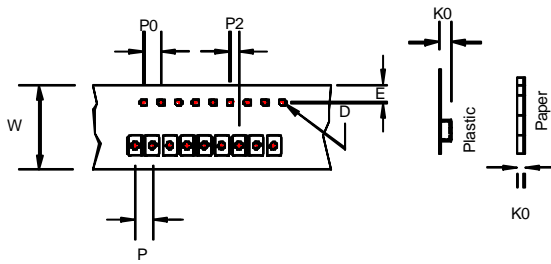
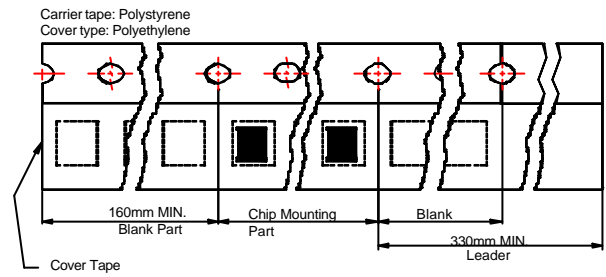


Packaging Specifications

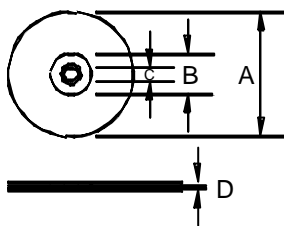
Tape Dimensions



Tape Material



Reel Dimensions



Dimensions in mm

| TYPE | Tape Dimensions | | | | | | | Reel Dimensions | | | | Quantity PCS / REEL |
|---------|-----------------|------|------|----|----|----|----|-----------------|-----|----|------|------------------------|
| | K0 | D | E | W | P | P0 | P2 | A | B | C | D | |
| SLF0628 | 3.4 | 1.55 | 1.75 | 16 | 12 | 4 | 2 | 330 | 100 | 13 | 17.4 | 1000 |
| SLF0728 | 3.5 | 1.55 | 1.75 | 16 | 12 | 4 | 2 | 330 | 100 | 13 | 17.4 | 1000 |
| SLF0730 | 3.7 | 1.55 | 1.75 | 16 | 12 | 4 | 2 | 330 | 100 | 13 | 17.4 | 1000 |
| SLF0732 | 3.5 | 1.55 | 1.75 | 16 | 12 | 4 | 2 | 330 | 100 | 13 | 17.4 | 1000 |
| SLF0745 | 4.8 | 1.55 | 1.75 | 16 | 12 | 4 | 2 | 330 | 100 | 13 | 17.4 | 1000 |
| SLF1045 | 5.0 | 1.55 | 1.75 | 24 | 16 | 4 | 2 | 330 | 100 | 13 | 24.4 | 500 |
| SLF1255 | 6.0 | 1.55 | 1.75 | 24 | 16 | 4 | 2 | 330 | 100 | 13 | 24.4 | 500 |
| SLF1265 | 7.0 | 1.55 | 1.75 | 24 | 16 | 4 | 2 | 330 | 100 | 13 | 24.4 | 500 |
| SLF1275 | 8.2 | 1.55 | 1.75 | 24 | 16 | 4 | 2 | 330 | 100 | 13 | 24.4 | 500 |